

# PERSONAL NAVIGATOR

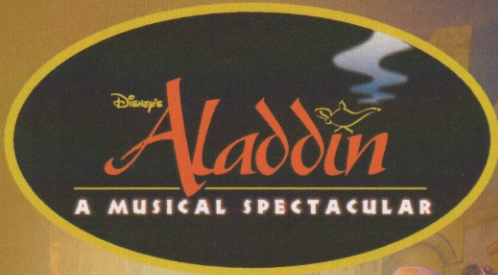


Sunrise: 7:14 a.m. Sunset: 7:54 p.m.  
Evening Attire: Formal

Sunday: Partly Sunny High: 84°F/29°C  
Monday: Partly Sunny High: 81°F/27°C

SUNDAY, APRIL 14, 2013

DAY AT SEA

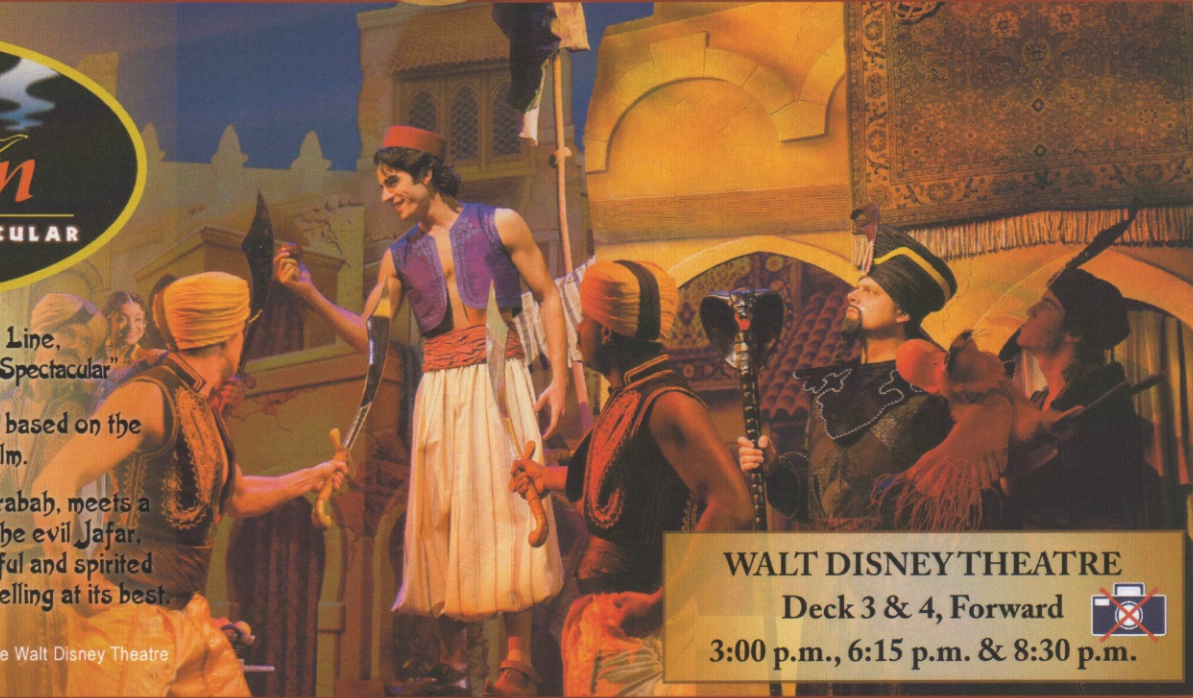


New to Disney Cruise Line,  
"Disney's Aladdin - A Musical Spectacular"

A fast-paced, musical comedy based on the beloved animated film.

Aladdin, the "street rat" of Agrabah, meets a wise-cracking Genie, battles the evil Jafar, and falls in love with the beautiful and spirited Princess Jasmine. Disney storytelling at its best.

Assistance available at the entrance to the Walt Disney Theatre 30 minutes prior to show time.



**WALT DISNEY THEATRE**  
Deck 3 & 4, Forward   
3:00 p.m., 6:15 p.m. & 8:30 p.m.

## Disney FANTASY Fun Facts

**Tonnage:** 130,000 Gross Tons

**Height:** 216 Feet

**Length:** 1115 Feet

### Important Dates

**Name Announcement:** March 10, 2009

**Steel Cutting:** March 16, 2010

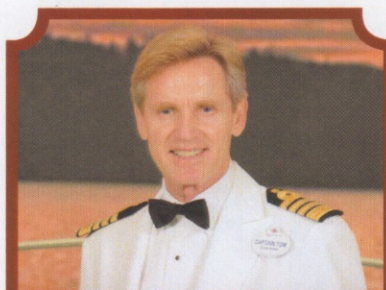
**Keel Laying:** February 11, 2011

**Delivery:** February 9, 2012

Almost 4 football fields in length, the Disney Fantasy is longer than the height of the Eiffel Tower in Paris (1,063 feet). She is also longer than the height of New York City's famous Chrysler building (1,047 feet).

The Disney Fantasy's whistle, a prominent element of the "Sailing Away" deck party at the start of the cruise, is quite the musical talent. It's able to perform not just the first musical line of "When You Wish Upon a Star" but also the second line of the song ("makes no difference who you are") plus several measures of "Yo Ho (A Pirate's Life for Me)," "It's a Small World," "Be Our Guest," "Hi Diddle Dee Dee (An Actor's Life for Me)" and "A Dream is a Wish."

*(These will be played after today's noon announcement)*



### CAPTAIN'S RECEPTION

Enjoy live music and a cocktail while meeting some of the ships officers.

*Lobby Atrium, Deck 3, Midship,  
5:00 & 7:30 p.m.*

Enjoy an exclusive photo opportunity with Captain Tom at  
*5:15 & 7:30 p.m., Lobby Atrium*

## Don't Miss:

### Painting with the Artist

*D Lounge, Deck 4, Midship - 9:30 a.m.*

Come see a unique demonstration by famed artist, David Schluss. Using his fingers as paintbrushes, he sculpts out images, textures and colors directly onto the canvas.

### Anyone Can Cook - Apple Strudel

*D Lounge, Deck 4, Midship - 2:15 p.m.*

From our galley to yours. Join our chefs as they show you how to prepare delicious dishes.

Today's Menu - Apple Strudel

### Art of The Theme Show Tour (18+)

*Pre-Book at Guest Services, Deck 3, Midship*

Join us on a guided ship tour and discover the key ingredients that make the Disney Fantasy cruise ship one-of-a-kind.

### Majority Rules

*The Tube, Deck 4, Aft - 10:00 p.m.*

Join your Club Host David, to find out who really rules!



### TIME ZONE CHANGE

Remember to turn your clocks **BACK 1 HOUR** upon retiring on **SUNDAY** evening, or first thing **MONDAY** morning.



Visit Shutters for all your photographic needs, from Digital cameras, batteries, binoculars and accessories. All photos taken during this cruise will be available for viewing on our photo kiosks at Shutters Digital, as well as in your photo folder at Shutters, Deck 4, Midship.

## DINNER MENU

Animator's Palate: Pacific Rim Cuisine  
Enchanted Garden: Continental Market Cuisine  
Royal Court: French Cuisine

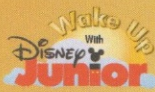
## DRINK OF THE DAY

Bahama Mama (Alcoholic)  
Coco Bali (Non Alcoholic)

## IMPORTANT NUMBERS

Fire/Security: 7-3001  
Medical Emergency: 7-3000  
Health Center: 7-1923

# FUN FOR ALL AGES HIGHLIGHTS



## WAKE UP WITH DISNEY JUNIOR

*D Lounge, Deck 4, Midship - 8:30 a.m.*

What happens when you experience unlimited fun with your favorite Disney Junior shows? An exciting dance party designed especially for preschoolers ages seven and under.

## WALKING SHIP TOUR

*Meet at Preludes, Deck 3, Forward - 9:15 a.m. & 11:30 a.m.*

Enjoy the beauty of the Disney Fantasy with your Cruise Staff in this guided tour.

## MOVIE CHALLENGE POOLSIDE

*Deck Stage, Deck 11, Midship - 12:30 p.m.*

So you like movies? And you like bingo? This deck party has them both! Come on out to watch all your favorite movie clips and just maybe your team will win the opportunity to choose the movie played by the pool today!

## DISNEY ANIMATION: CREATING A CHARACTER

*D Lounge, Deck 4, Midship - 12:45 p.m.*

Go behind the scenes at Walt Disney Animation Studios as Walt Disney himself talks about his most famous characters, then learn the basic techniques of drawing Mickey and Donald in this fun and interesting enrichment program.

## PORT & SHOPPING SHOW

*Buena Vista Theatre, Deck 4 & 5, Forward - 1:30 p.m.*

Join Shopping Guides Johan & Marissa to learn about the incredible shopping ashore this cruise! FREE Charm Bracelet & Raffle to win a Diamond Pendant!

## MICKEY 200

*The Tube, Deck 4, Aft - 2:15 p.m.*

Don't eat your vegetables... race them in this wild and wacky charge to the finish line. May the best veggie win! (Limited Availability)

## PLAYHOUSE D LOUNGE

*D Lounge, Deck 4, Midship - 5:15 p.m.*

Calling our youngest of cruisers! Here is a special Playtime that is just for you. Come meet new friends and join in on the fun as your Cruise Staff team takes you through interactive activities made just for you!

## FAMILY SUPERSTAR KARAOKE

*D Lounge, Deck 4, Midship - 10:30 p.m.*

Join your Cruise Staff in D Lounge tonight and sing along to your favorite song - fun for everyone.



# ADULT ACTIVITY HIGHLIGHTS

## SENSES SPA FITNESS CLASSES & SEMINARS

*Sunrise Stretch* - Donald's Pool - 7:00 a.m.

*Fab Abs* - Donald's Pool - 7:30 a.m.

*Body Sculpt Boot Camp* (Nom. Fee) - Senses Fitness Center - 9:00 a.m.

*Introduction to Acupuncture* - Outlook, Deck 14, Mid - 11:15 a.m.

*How to Increase your Metabolism* - Senses Spa & Salon - 12:00 p.m.

*Detox For Health and Weight Loss* - Senses Spa & Salon - 1:00 p.m.

*Arthritis Solutions* - Outlook, Deck 14, Mid - 2:15 p.m.

*Posture Analysis* - Senses Fitness Center - 3:00 p.m.

*Group Cycling* - Senses Fitness Center - 4:00 p.m.

*Fab Abs* - Senses Fitness Center - 5:00 p.m.

*Fitness Frenzy* (13-17, Nom. Fee) - Senses Fitness Center - 7:00 p.m.



## TASTING CLASSES

*Champagne Tasting* (21+) - Ooh La La (Nom. Fee, Pre Book) - 12:15 p.m.

*Martini Tasting* (21+) - Meridian (Nom. Fee Pre Book) - 1:00 p.m.

*New World Wine Tasting* (21+) - Ooh La La (Nom. Fee, Pre Book) - 2:00 p.m.

*Mixology* (21+) - Skyline (Nom. Fee, Pre Book) - 3:00 p.m.

*Amari Tasting* (21+) - Ooh La La (Nom. Fee, Pre Book) - 4:45 p.m.

*Whiskey Tasting* (21+) - Meridian (Nom. Fee Pre Book) - 10:30 p.m.

Please make reservations for tastings at Guest Services for a nominal fee.

Tasting Seminars are only for Guests 21 and Older.



## CLUB 18\*21 - LUNCH

*Royal Court, Deck 3, Midship - 12:15 p.m.*

## CLUB 18\*21 - GIANT JENGA

*O'Gills Pub, Deck 4, Aft - 4:00 p.m.*

## CLUB 18\*21 - MIXER

*The Tube, Deck 4, Aft - 10:00 p.m.*

## ART OF THE THEME SHOW TOUR

*Pre-Book at Guest Services, Deck 3, Midship*

Join us on a guided ship tour and discover the key ingredients that make the Disney Fantasy cruise ship one-of-a-kind.



## ESPN DREAM TEAM DRAFT DAY - BASEBALL

*O'Gills Pub, Deck 4, Aft - 10:30 a.m.*

Play ball! Join the "Commissioner" and engage in this interactive fantasy baseball draft unlike anything you've ever seen! Can YOU draft the greatest baseball team of All-Time?

## GOING UNDERGROUND WITH GUEST DJ CLINT KUPER

*The Tube, Deck 4, Aft - 10:30 p.m. & 11:30 p.m.*

Hold onto the handrails as we take you underground with our Guest DJ Clint Kuper.

## DIAMOND JACKPOT BINGO

**D Lounge, Deck 4, Midship**

**Card Sales - 10:45 a.m.**

**Game Starts - 11:00 a.m.**

Join us for 4 cash prize games, plus your chance to win a Diamond and Sapphire Pendant, courtesy of your Shopping Guide.

## \$5,000 MEGA JACKPOT BINGO WITH SPECIAL GUEST ARTIST DAVID SCHLUSS

**D Lounge, Deck 4, Midship**

**Card Sales - 4:00 p.m.**

**Game Starts - 4:15 p.m.**

It's big, it's massive, it's supersized. It's \$5,000 MEGA jackpot bingo! Take home \$5,000 if you can cover your card in 46 numbers or less. If not, we carry on to play for the biggest cash prize of the session. Plus you'll have the chance to win artwork created by Guest artist, David Schluss.

# YOUTH ACTIVITIES HIGHLIGHTS

## DINE & PLAY

A convenience for families dining at 8:15 p.m., our Youth Activities Counselors will be available at 9:15 p.m. at the entrance of Royal Court, Enchanted Garden and Animator's Palate dining rooms to bring registered children to join the fun in the Youth Activity areas.



*Deck 5, Midship (7-1440)*  
(3-12 years old) **9:00 a.m. - 12:00 mid**

### MICKEY'S PUZZLE PLAYTIME

*9:15 a.m.*  
Come and Play with Mickey & friends as they share their favorite games, puzzles and dances!

### TINKER BELL'S TALENT SHOW

*1:45 p.m.*  
Tinker Bell has come from Pixie Hollow to Disney Cruise Line to help young cruisers discover their Fairy Talents.



*Deck 5, Midship (7-1445)*  
(3-12 years old) **9:00 a.m. - 1:00 a.m.**

### STITCH'S ADVENTURE SQUAD

*9:30 a.m.*  
Stitch, everyone's favorite alien, is making an appearance to share some of his mischievous games and activities.

### GET THE HOOK

*4:15 p.m.*  
A villainous villain has stolen Captain Hook's prized golden hook. Become a member of the Top Deck Detective Agency and help solve the clue's to retrieve Hook's hook.



*Deck 13, Midship (7-9743)*  
(11-14 years old) **10:00 a.m. - 1:00 a.m.**

### FLUBBER

*2:00 p.m.*  
Encounter solid, liquid, gas and make "Flubber-like Goo".

### SHIP FACTOR

*8:30 p.m.*  
Ready for one of the toughest challenge competitions onboard?

### THAT'S HILARIOUS

*9:45 p.m.*  
Ever wanted to show off your comedy skills? Then be a part of the cast for the crazy improv show "That's Hilarious" and put on a live show for your friends.



*Entrance on Deck 4, Forward (7-9418)*  
(14-17 years old) **10:00 a.m. - 2:00 a.m.**

### ZOMBIFIED

*1:30 p.m.*  
A big movie producer is looking for a few good zombies to help him film the finale to his latest masterpiece, Zombified.

### ESPN DREAM TEAM DRAFT DAY - BASKETBALL

*7:15 p.m.*  
Join the "Commissioner" and engage in this interactive fantasy basketball draft unlike anything you've ever seen! Can YOU draft the greatest basketball team of All-Time?

# BUENA VISTA THEATRE

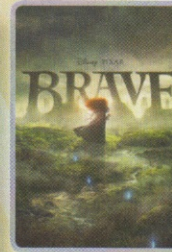
## Today's Movies

**DOLBY 3D**

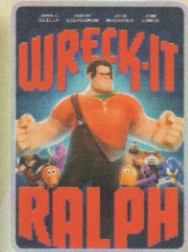


8:30 a.m.  
Duration:  
1 hr 40 min  
Rating: G

**DOLBY 3D**



10:30 a.m.  
Duration:  
1 hr 41 min  
Rating: PG



3:00 p.m.  
Duration:  
1 hr 53 min  
Rating: PG

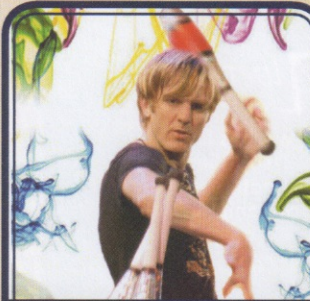
**DOLBY 3D**



5:15 p.m. & 7:45 p.m.  
Duration: 2 hr 22 min  
Rating: PG-13



10:30 p.m.  
Duration: 2 hr 30 min  
Rating: PG-13



### FAMILY CABARET

Featuring the Comedy & Juggling of Mike Price, as he entertains the entire family in this fun-filled show.

*The Tube,*  
*Deck 4, Aft,*  
*7:30 p.m.*



### ADULT CABARET

Star of the Disney Channel Show SNAP, Hypnotist Ricky Kalmon brings you the only adult exclusive comedy show where the audience becomes the stars!

*Walt Disney Theatre, (18+)*  
*Deck 3 Forward,*  
*Doors Open at 10:30 p.m.*  
*10:45 p.m.*

## YOUTH ACTIVITIES OPEN HOUSE

Open House is an opportunity for all to come and participate in a variety of exciting activities and free time in the Oceaneer Club, Lab and Edge throughout the cruise. During these times secured programming will still be offered in the other venue for those looking to check their children into care.

Disney's Oceaneer Lab: 6:00 p.m. - 8:00 p.m.

Disney's Oceaneer Club: 9:00 a.m. - 10:00 a.m.

Vibe: 9:00 a.m. - 10:00 a.m.

Edge: 9:00 a.m. - 10:00 a.m.

# MORE TO ENJOY WHILE ONBOARD



## PLAN YOUR NEXT CRUISE

Another Disney Cruise Line vacation is in your future! Book a future cruise today and you'll save 10%, receive up to a \$200 onboard credit, and pay a reduced deposit! Visit the Future Cruise Sales Desk, Deck 4, Midship. Book by 8:30 p.m. Monday for a chance to win \$100 Onboard Credit for this cruise!



## PORT & SHOPPING SHOW

The Buena Vista Theatre, Deck 4 Forward 1:30 p.m. Join Shopping Guides Johan & Marissa to learn about the incredible shopping ashore this cruise! FREE Charm Bracelet & Raffle to win a Diamond Pendant!



## DISNEY VACATION CLUB® MEMBERS CELEBRATION

Members! Mix and mingle with other Members and learn how you can enhance your Membership! Please see a Disney Vacation Club representative on Deck 4, Midship, or call 7-2805 from your stateroom phone for more information.

## ONBOARD AIRLINE CHECK IN

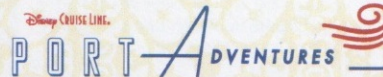
If you would like to have your boarding passes printed for you onboard and have your luggage taken to the airport for you, register before Wednesday. If you have a Disney Cruise Line airport transfer to Orlando International Airport and fly with one of the participating airlines, stop at Guest Services, Deck 3, Midship to register.

## ARR-CADE

Where can you be a ninja, play the guitar like a rock star, race a car down the streets of Tokyo and along the way WIN some great prizes? Arr-cade located Deck 11, Aft where the pirates play.

## ON DEMAND TV

Watch Disney movies, Hollywood features, ABC Shows, and even captioned content, plus much more "On Demand" for FREE in the comfort of your stateroom! Bookmark your movie and come back to watch it later. Press MENU on your stateroom television remote control, and follow the prompts.



Limited spaces available for our most popular tours, so visit the Port Adventures Desk today to reserve your place. Why not explore the Chacchoben Mayan Ruins in Costa Maya, an awe-inspiring reminder of this fascinating civilization. For the families, we offer Dolphin experiences in Grand Cayman, Costa Maya and Cozumel, so why not let this cruise be the time to enjoy this once in a lifetime experience.

## SHOPPING

### FRAGRANCE OF THE DAY

Stop by Whitecaps to test our selected fragrance today! Deck 3, Forward.

### HELPFUL SHOPPING TIP

Don't have time to drop off your souvenirs at your stateroom before dinner or a show? For your convenience, Disney Cruise Line's merchandise locations can hold your purchased items for up to 24 hours while you enjoy the other Disney Cruise Line experiences you don't want to miss out on. Whitecaps, Sea Treasures, and Mickey's Mainsail, Deck 3, Forward.

### TAX FREE SHOPPING? YES, PLEASE!

That's right! Do all of your tax and duty free shopping right on board by visiting Whitecaps, Sea Treasures, and Mickey's Mainsail. Deck 3, Forward.

### ALBERTO COLLECTION HOUSE OF TANZANITE PRESENTATION

Come learn about the beauty of Tanzanite, one of the worlds most elegant gems. This is a one-of-a-kind presentation you don't want to miss. Today in Whitecaps, Deck 3, Forward at 11:00 a.m.

### GOING ONCE, GOING TWICE, SOLD!

Don't miss the live auction where you'll have the opportunity to take home beautiful artwork from an array of internationally renowned artists, including celebrated artist David Schluss. The Tube, Deck 4, Aft.

### SWAROVSKI

Crystal glass from Austria that exceeds all others in terms of quality and elegance. Boxed jewelry pieces and Disney figurines now available in Whitecaps, Deck 3, Forward.

### FOSSIL

A Great American Brand Since 1984. Choose from a large variety of popular styles in fine leather goods and accessories for men and women.

## ACUPUNCTURE

Acupuncture allows your body to heal itself. It is painless, deeply relaxing and rejuvenating for mind and body, and is effective for various conditions. See your onboard Acupuncture Therapist for your complimentary consultation.  
Senses Spa & Salon, 7-1465

## ALBERTO TRUNK SHOW

House of Tanzanite special trunk show of fine Tanzanite, colored Diamonds, Alexandrite, and Emerald jewelry from classic chic to over the top elegant designs hand made in the US.

**Alberto Collections**  
world's largest supplier of distinctive and fine Tanzanite jewelry

This week onboard at Whitecaps

## Shutters FORMAL PORTRAITS TONIGHT!

Moon, Mural & Bow - Six guests maximum please  
Grand Staircase & Minnie Statue - Groups accommodated

5:00 p.m. - 6:00 p.m.  
7:15 p.m. - 8:30 p.m.  
9:30 p.m. - 10:30 p.m.

*\*Please note that photos are available for viewing on our interactive photo kiosks approximately five hours after being taken and are only available for purchase during this cruise.*

## IMPORTANT INFORMATION

### Security Notice

All Guests (including children) who wish to disembark the ship are required to present their Key to the World card at the gangway. A photo ID is also required for those Guests who are 18 years of age or older. Guests under the age of 18 are required to have a Parent, Guardian or other responsible adult sign an authorization form at the time it is given out if they wish to go ashore unaccompanied. Authorization forms are available at the gangways and Guest Services.

### Please Note:

Please remember to use plenty of sunscreen and mosquito repellent when venturing ashore.

### Cold and Flu Reminder

Please wash hands frequently and thoroughly; particularly before meals. Contact the Health Center by dialing 7-1923, should anyone in your party become ill.

### Corridor Quiet Hours

As a courtesy to all our Guests, please recognize quiet hallway hours from 10:00 p.m. til 8:00 a.m.

### Inclement Weather

For the safety of all Guests, outdoor events may be changed due to unforeseen weather conditions.

### Environmental Message

With Disney's commitment to the Environment, please refrain from throwing anything over the Ship's side. Thank you!

### No Reserved Seats Policy

As a courtesy to all our Guests, we kindly advise that the saving of seats is not permitted in the Walt Disney Theatre, and the saving of the sun loungers is not permitted on Deck 11, 12, and 13. Items left unattended will be returned to lost and found at Guest Services, Deck 3 Midship.

### Smoking

For the comfort of our guests the following areas are designated as Smoking areas: - Promenade Deck (Deck 4), smoking is permitted Port Side, Aft only from 6:00 p.m. to 6:00 a.m.  
- Currents - Deck 13, Forward, Port Side.  
- Meridian Bar - Deck 12, Aft, Port Side, outside.  
- Smoking is permitted on stateroom verandahs. Smoking is prohibited inside all guest staterooms. Guests found smoking in their staterooms will be charged a \$250 stateroom recovery fee.

### Walt Disney Theatre

Theatrical performances may use artificial fog, strobe lights, pyrotechnics and other special effects. For the safety of our performers and the comfort of those around you, the use of any photography, video recording device or any electronic equipment is prohibited.

### Verandah Safety

Please do not leave any combustible materials on your balcony when not present in your stateroom for safety reasons.

Morning	8:30	8:45	9:00	9:15	9:30	9:45	10:00	10:15	10:30	10:45	11:00	11:15	11:30	11:45	12:00	12:15	12:30	12:45	1:00	1:15	1:30
FUNNEL VISION	The Artistocats (G) Funnel Vision				Aladdin (G) Funnel Vision				Movie Challenge Poolside Funnel Vision												
BUENA VISTA THEATRE	Finding Nemo <b>DOLBY 3D</b> (G) Duration: 1 Hours 40 Minutes								Brave (PG) Duration: 1 Hours 41 Minutes								Shopping Talk				
CHARACTER	Mickey Dk 4, Mid		Donald Dk 4, Mid		Princess Gathering Lobby Atrium				Daisy Dk 4, Mid		Minnie Dk 4, Mid		Stitch Dk 4, Mid		Goofy Goofy's Sports Deck		Chip & Dale Dk 4, Mid		Daisy Lobby Atrium (P)		
FUN FOR ALL AGES	Disney Vacation Club Members Celebration The Tube				Painting with the Artist: David Schlus D Lounge				Bingo Pre Sales		Diamond Jackpot Bingo D Lounge		Family Crafts: Tote Bags La Piazza		Disney Animation: Creating a Character D Lounge		Port & Shopping Show Buena Vista Theatre		Disney Vacation Club Group Preview The Tube		
	Walking Ship Tour Preludes		Interdenominational Service Outlook, Deck 14, Mid				Family Crafts: Door Signs La Piazza		Walking Ship Tour Preludes		Movie Challenge Poolside Deck Stage, Deck 11, Midship										
ADULTS	Friends of Bill W. Outlook, Deck 14, Mid		Body Sculpt Boot Camp (Nom. Fee) Senses Fitness Center				ESPN Dream Team Draft Day - Baseball O'Gills Pub				Introduction to Acupuncture Outlook, Deck 14, Mid		Crafts - Tile Coasters O'Gills Pub		TV Tunes Trivia O'Gills Pub						
	XBox® Kinect™ - Wipeout Challenge O'Gills Pub										50's & 60's Music Trivia O'Gills Pub		Singles Lunch Royal Court		Martini Tasting (21+) Meridian (Nom. Fee Pre Book)						
VIBE 14-17 YEARS OLD	Open House				Open for Teens				Coffee Break		Sun Deck Fun		Spoons		Zombified						
EDGE 11-14 YEARS OLD	Open House				Pictionary				Magic Show		Human Bingo		GAGA Ball								
OCEANEER LAB 3-12 YEARS OLD	Stitch's Adventure Squad				Super Sloppy Science - Flubber				Games & More		Lunch		Explore the Lab!								
OCEANEER CLUB 3-12 YEARS OLD	Open House and Registration				Memory Wall		Aloha Luau		Coloring Corner				Cruisin' with Crush								
	Mickey's Puzzle Playtime								Magic Playfloor												

Afternoon	1:45	2:00	2:15	2:30	2:45	3:00	3:15	3:30	3:45	4:00	4:15	4:30	4:45	5:00	5:15	5:30	5:45	6:00	6:15	6:30	6:45	
FUNNEL VISION	Gnomeo & Juliet (G) Funnel Vision								The Princess Diaries (PG) Funnel Vision													
BUENA VISTA THEATRE	Port & Shopping Talk				Wreck-It Ralph <b>DOLBY 3D</b> (PG) Duration: 1 Hours 53 Minutes								The Avengers <b>DOLBY 3D</b> (PG-13) Duration: 2 Hours 22 Minutes									
CHARACTER	Mickey Dk 4, Mid	Donald Dk 4, Mid	Chip & Dale Dk 4, Mid	Max Goofy's Sports Deck	Mickey Dk 4, Mid	Pluto Goofy's Sports Deck				Pluto Goofy's Sports Deck	Chip & Dale Dk 4, Mid	Minnie Dk 4, Mid	Goofy Preludes	Mickey Dk 4, Mid	Minnie Preludes	Donald Dk 4, Mid						
FUN FOR ALL AGES	Port & Shopping Show Buena Vista Theatre < Starts 1:30 p.m.		Disney Cruise Line <b>ANYONE CAN COOK</b> D Lounge - Apple Strudel				Disney <b>Aladdin</b> A MUSICAL SPECTACULAR Walt Disney Theatre				Bingo Pre Sales	\$5,000 Mega Jackpot D Lounge		Captain's Welcome Reception Lobby Atrium		Playhouse D Lounge D Lounge		Disney <b>Aladdin</b> A MUSICAL SPECTACULAR Walt Disney Theatre				
	Family Crafts: Paper Planes La Piazza		Mickey 200 The Tube (Limited Availability)				Disney Tune Trivia La Piazza				Live Guitar with John Kevish Deck 12, Forward											
ADULTS	New World Wine Tasting (21+) Ooh La La (Nom. Fee, Pre Book)				Art of the Theme Show Tour Pre-Book at Guest Services				Club 18*21 - Giant Jenga O'Gills Pub		Watch Seminar La Piazza		Fab Abs Senses Fitness Centre									
	The Masters O'Gills Pub (Subject to Satellite Availability)				Mixology (21+) Skyline (Nom. Fee, Pre Book)				Group Cycling Senses Fitness Centre		Amari Tasting (21+) Ooh La La (Nom. Fee, Pre Book)											
VIBE 14-17 YEARS OLD	Zombified				Dive into DJ'ing				Digi-Hunt		Dance Central Challenge		Pictionary									
EDGE 11-14 YEARS OLD	Flubber				A to Z Scavenger Hunt				Mad Gab		Dodgeball		Craft Time		Animation Cells							
OCEANEER LAB 3-12 YEARS OLD	Create a Port Hole				Disney Animation: Creating a Character				Get the Hook		Open House											
	Anyone Can Cook				Stop The Boat				Dinner		Wii Challenge											
OCEANEER CLUB 3-12 YEARS OLD	Tinker Bell's Talent Show		4 Corners		Toy Story Boot Camp		Picture This		Magic Playfloor		Memory Wall		Parachute Games		Crafts Galore							
	Pictionary																					
OUT AND ABOUT	Hold The Phone Deck 2, Midship																					

Evening	7:00	7:15	7:30	7:45	8:00	8:15	8:30	8:45	9:00	9:15	9:30	9:45	10:00	10:15	10:30	10:45	11:00	11:15	11:30	11:45	12:00		
FUNNEL VISION	Ratatouille (G) Funnel Vision								Cool Runnings (PG) Funnel Vision														
BUENA VISTA THEATRE	The Avengers <b>DOLBY 3D</b> (PG-13) Duration: 2 Hours 22 Minutes								Lincoln (PG-13) Duration: 2 Hours 30 Minutes														
CHARACTER	Cinderella Preludes		Mickey Dk 4, Mid		Donald Dk 4, Mid		Minnie Preludes		Mickey Dk 4, Mid		Minnie Dk 4, Mid												
FUN FOR ALL AGES	Cabaret: Mike Price The Tube - Juggling		Disney <b>Aladdin</b> A MUSICAL SPECTACULAR Walt Disney Theatre				Club D Dance Party D Lounge		Family Superstar Karaoke D Lounge		Live Music with The Switch Lobby Atrium		Live Piano with Gayla Smith Lobby Atrium										
	Captain's Welcome Reception Lobby Atrium				Family Dance Party with June Gypsies D Lounge																		
ADULTS	Live Guitar with John Kevish O'Gills Pub								Majority Rules The Tube		Guest DJ Clint Kuper The Tube		Adult Cabaret: Ricky Kalmon - Hypnotist Walt Disney Theatre Doors Open 10:30 p.m.		Going Underground with Guest DJ Clint Kuper The Tube								
	Live Music La Piazza								Club 18*21 Mixer The Tube														
VIBE 14-17 YEARS OLD	Pictionary				ESPN Dream Team Draft Day - Basketball				Smoothie Time		Crowning the Couch Potato		Magic Show		Bring It!								
EDGE 11-14 YEARS OLD	Four Square				Ice Breakers				Ship Factor		That's Hilarious		Gender Wars		GAGA Ball		Mirror, Mirror						
OCEANEER LAB 3-12 YEARS OLD	Open House				Monster's Inc: Open "Mike" Night				XBox® Kinect™ Tournament		Glow Jam		Magic Playfloor		Movie Night								
	Wii Challenge				Disney Trivia				Detective School														
OCEANEER CLUB 3-12 YEARS OLD	Crafts Galore		Once Upon a Time		Block Building		Ball Games		Magic Playfloor		Movie Time												
	Go Fetch				A to Z Scavenger Hunt																		
OUT AND ABOUT	Table Tennis Goofy's Sports Deck																						

Symbol for activities that will be repeated during the cruise

Youth Activities Open House

FOLD

Fold along the dotted lines and take me with you so you don't miss any of the fun!

FOLD

IN THE SPOTLIGHT SERIES

SOLVE IT! SERIES

JUMP UP! SERIES

CREATE & INVENT SERIES

CLUBHOUSE SERIES

STORYBOOK SERIES

SUNDAY, APRIL 14, 2013 - DAY AT SEA

# BUENA VISTA THEATRE



8:30 a.m. Duration: 1 hr 40 min Rating: G	10:30 a.m. Duration: 1 hr 41 min Rating: PG	3:00 p.m. Duration: 1 hr 53 min Rating: PG	5:15 & 7:45 p.m. Duration: 2 hr 22 min Rating: PG-13	10:30 p.m. Duration: 2 hr 30 min Rating: PG-13
--	--	---	---	---

## Character Appearances

**MICKEY MOUSE**  
Deck 4, Balcony  
9:00 a.m., 1:45 p.m.,  
2:45 p.m., 5:30 p.m.,  
7:45 p.m. & 9:45 p.m.

**DONALD DUCK**  
Deck 4, Balcony  
9:30 a.m., 6:00 p.m.  
& 8:15 p.m.  
Lobby Atrium (P)  
1:00 p.m. & 2:00 p.m.

**PRINCESS GATHERING**  
Lobby Atrium - 10:00 a.m.

**PRINCESS MINNIE**  
Deck 4, Balcony  
10:15 a.m. & 11:15 a.m.

**DAISY DUCK**  
Deck 4, Balcony - 10:45 a.m.  
Lobby Atrium (P)  
1:30 p.m. & 2:30 p.m.

**STITCH**  
Deck 4, Balcony - 12:45 p.m.

**GOOFY**  
Goofy's Sports Deck  
1:00 p.m. & 2:00 p.m.  
Preludes - 5:15 p.m.

**CHIP & DALE**  
Deck 4, Balcony  
1:15, 2:15 p.m. & 4:30 p.m.

**MAX**  
Goofy's Sports Deck  
1:30 p.m. & 2:30 p.m.

**PLUTO**  
Goofy's Sports Deck  
3:00 p.m. & 4:00 p.m.

**MINNIE MOUSE**  
Deck 4, Balcony  
5:00, 7:15 p.m. & 10:15 p.m.  
Preludes - 5:45 p.m. & 9:30 p.m.

**CINDERELLA**  
Preludes - 7:15 p.m.

**ARIEL**  
Preludes - 7:45 p.m.

**SNOW WHITE**  
Preludes - 8:15 p.m.

(H) Hallway - (S) Starboard Side - (P) Port Side - (V) Vestibule

For details of daily Disney character appearances, refer to the character line on your Navigator Grid, or the digital character board in the Lobby Atrium.

### IMPORTANT NUMBERS

Fire/Security: 7-3001  
Medical Emergency: 7-3000  
Health Center: 7-1923

### YOUTH ACTIVITIES THEMED EXPERIENCES

**CLUBHOUSE SERIES**  
focuses on movement and features content which appeals to younger children.

**JUMP UP! SERIES**  
includes large ground games & movement-oriented activities.

**IN THE SPOTLIGHT SERIES**  
focuses on children's stage presence with lots of activities and enthusiasm.

**STORYBOOK SERIES**  
is designed with a strong connection to the Disney classic stories.

**CREATE & INVENT SERIES**  
will have a tactile focus allowing children to create and admire their work.

**SOLVE IT! SERIES**  
are less active, but will challenge children with problem/solutions-based activities.

#### YOUTH ACTIVITIES OPEN HOUSE

A non-secured program with activities for families, adults and children of all ages to enjoy together.

### SHIP DIRECTORY

#### YOUTH ACTIVITIES

DISNEY'S OCEANEER CLUB	DECK 5, MID	9:00 AM - 12:00 MID
DISNEY'S OCEANEER LAB	DECK 5, MID	9:00 AM - 1:00 AM
EDGE	DECK 13, MID	10:00 AM - 1:00 AM
VIBE	DECK 4, FWD	10:00 AM - 2:00 AM
IT'S A SMALL WORLD NURSERY	DECK 5, MID	9:00 AM - 11:30 PM

#### RECREATION

AQUADUCK	DECK 12, MID	9:00 AM - 10:00 PM
AQUALAB	DECK 12, AFT	10:00 AM - 6:00 PM
DONALD'S POOL	DECK 11, MID	6:00 AM - 12:00 MID
GOLF/SPORTS SIMULATORS	DECK 13, AFT	9:00 AM - 6:00 PM
GOOFY GOLF	DECK 13, AFT	8:00 AM - 10:00 PM
GOOFY'S SPORTS DECK	DECK 13, AFT	8:00 AM - 6:00 PM
MICKEY'S POOL	DECK 11, MID	6:00 AM - 11:00 PM
MICKEY'S SLIDE	DECK 11, MID	9:00 AM - 6:00 PM
MIDSHIP DETECTIVE AGENCY	DECK 2 & 5, MID	9:00 AM - 9:00 PM
NEMO'S REEF	DECK 11, MID	9:00 AM - 6:00 PM
PORT ADVENTURES DESK	DECK 5, MID	9:00 AM - 5:00 PM 7:00 PM - 8:30 PM
QUIET COVE POOL	DECK 11, FWD	6:00 AM - 12:00 MID
SATELLITE FALLS	DECK 13, FWD	6:00 AM - 6:00 PM
SENSES FITNESS CENTER	DECK 11, FWD	6:30 AM - 10:00 PM

#### GENERAL INFORMATION

ARR-CADE	DECK 11, AFT	24 HOURS
DISNEY VACATION CLUB	DECK 4, MID	2:30 PM - 10:00 PM
FUTURE CRUISE SALES DESK	DECK 4, MID	10:00 AM - 1:00 PM 3:00 PM - 6:00 PM 7:30 PM - 8:30 PM
GUEST SERVICES	DECK 3, MID	24 HOURS
MEDICAL HEALTH CENTER	DECK 1, FWD	9:30 AM - 11:00 AM 4:30 PM - 7:00 PM
PORT & SHOPPING DESK	DECK 4, MID	7:30 PM - 8:30 PM
PRELUDES	DECK 3, FWD	2:30 PM - 3:15 PM 5:45 PM - 6:30 PM 8:00 PM - 8:45 PM
SENSES SPA AND SALON	DECK 11, FWD	8:00 AM - 10:00 PM
SHUTTERS PHOTO GALLERY	DECK 4, MID	9:30 AM - 12:30 PM 7:00 PM - 11:00 PM
SHUTTERS DIGITAL	DECK 4, MID	24 HOURS

#### SHOPPING

BIBBIDI BOBBIDI BOUTIQUE	DECK 5, MID	9:00 AM - 9:00 PM
MICKEY'S MAINSAIL	DECK 3, FWD	9:30 AM - 11:00 PM
QUACKS	DECK 11, MID	10:00 AM - 4:00 PM
SEA TREASURES	DECK 3, FWD	9:30 AM - 11:00 PM
VISTA GALLERY	DECK 4, MID	
WHITECAPS	DECK 3, FWD	9:30 AM - 11:00 PM
WHOZITS & WHATZITS	DECK 11, MID	10:00 AM - 4:00 PM

### DINNER MENU

Animator's Palate: Pacific Rim Cuisine  
Enchanted Garden: Continental Market Cuisine  
Royal Court: French Cuisine  
Dining Times: 5:45 p.m. & 8:15 p.m.

### DRINK OF THE DAY

Bahama Mama (Alcoholic)  
Coco Bali (Non Alcoholic)

### WEATHER FORECAST

Sunday: Partly Sunny  
High: 84°/29°C  
Monday: Partly Sunny  
High: 81°/27°C

Evening Attire: Formal

### DINING & LOUNGES

#### BREAKFAST

CABANAS CONTINENTAL	DECK 11, AFT	7:00 AM - 7:30 AM
CABANAS	DECK 11, AFT	7:30 AM - 11:30 AM
ENCHANTED GARDEN	DECK 2, MID	8:30 AM - 10:45 AM
ROYAL COURT	DECK 3, MID	8:00 AM - 9:30 AM

#### LUNCH

CABANAS	DECK 11, AFT	11:30 AM - 2:00 PM
ENCHANTED GARDEN	DECK 2, MID	
FILLMORE'S FAVORITES	DECK 11, MID	11:00 AM - 6:00 PM
LUIGI'S PIZZA	DECK 11, MID	11:00 AM - 6:00 PM
ROYAL COURT	DECK 3, MID	12:00 PM - 1:30 PM
TOW MATER'S GRILL	DECK 11, MID	11:00 AM - 11:00 PM

#### DINNER

ANIMATOR'S PALATE	DECK 3, AFT	5:45 PM & 8:15 PM
ENCHANTED GARDEN	DECK 2, MID	5:45 PM & 8:15 PM
ROYAL COURT	DECK 3, MID	5:45 PM & 8:15 PM
CABANAS TABLE SERVICE	DECK 11, AFT	6:30 PM - 8:30 PM
PALO (18+) (RESERVATIONS REQ. & NOM. FEE APPLIES)	DECK 12, AFT	6:00 PM - 8:30 PM
REMY (18+) (RESERVATIONS REQ. & NOM. FEE APPLIES)	DECK 12, AFT	6:00 PM - 8:30 PM

#### LATE NIGHT SNACKS

LA PIAZZA (18+)	DECK 4, AFT	10:45 PM - 11:45 PM
LUIGI'S PIZZA	DECK 11, MID	9:30 PM - 12:30 AM

#### ADDED FEATURES

BEVERAGE STATION	DECK 11, MID	24 HOURS
EYE SCREAM	DECK 11, MID	11:00 AM - 11:00 PM
ROOM SERVICE	DIAL 0	24 HOURS

#### ENTERTAINMENT - LOUNGES - BARS

Adults must be 21 and older to consume alcoholic beverages.

BON VOYAGE	DECK 3, MID	9:00 AM - 11:00 PM
COVE BAR (18+)	DECK 11, FWD	10:00 AM - 11:00 PM
COVE CAFE (18+)	DECK 11, FWD	7:00 AM - 12:00 MID
CURRENTS (18+)	DECK 13, FWD	10:00 AM - 11:00 PM
D LOUNGE	DECK 4, MID	SHOWTIMES
FROZONE TREATS	DECK 11, MID	11:00 AM - 11:00 PM
LA PIAZZA	DECK 4, AFT	12:30 PM - 12:00 MID
MERIDIAN (18+)	DECK 12, AFT	10:00 AM - 12:00 MID
O'GILLS PUB (18+ AFTER 9:00 PM)	DECK 4, AFT	12:00 PM - 12:00 MID
QOH LA LA (18+)	DECK 4, AFT	5:00 PM - 12:00 MID
OUTLOOK	DECK 14, MID	SUNSET TIMES
SKYLINE (18+)	DECK 4, AFT	5:00 PM - 12:00 MID
THE TUBE (18+)	DECK 4, AFT	10:00 PM - 2:00 AM
VISTA CAFE	DECK 4, MID	7:30 AM - 11:00 PM
WAVES	DECK 12, AFT	10:30 AM - 6:30 PM

Consumers who order raw or partially cooked, ready-to-eat food of animal origin, are hereby informed that the food is not sufficiently cooked to ensure its safety.



### TIME ZONE CHANGE

Remember to turn your clocks **BACK 1 HOUR** upon retiring on **SUNDAY** evening, or first thing **MONDAY** morning.

### IMPORTANT NUMBERS

Fire/Security: 7-3001  
Medical Emergency: 7-3000  
Health Center: 7-1923